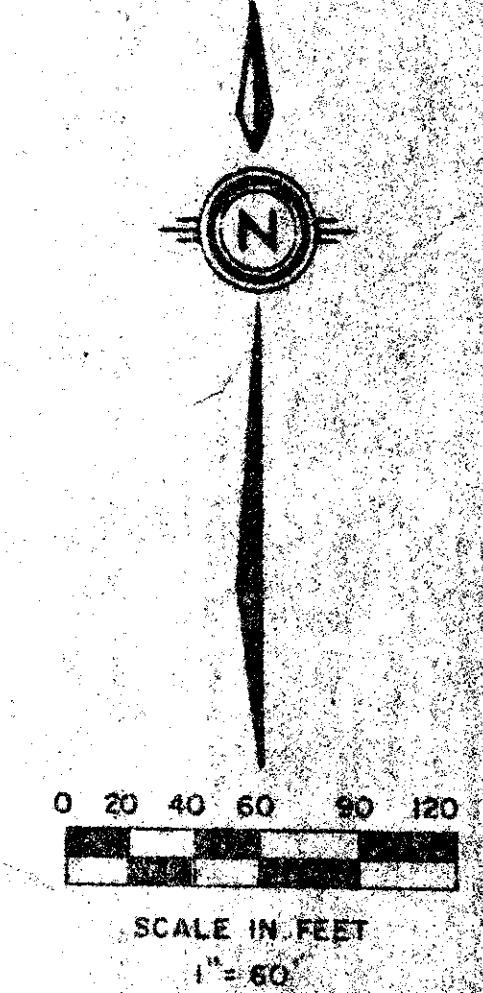
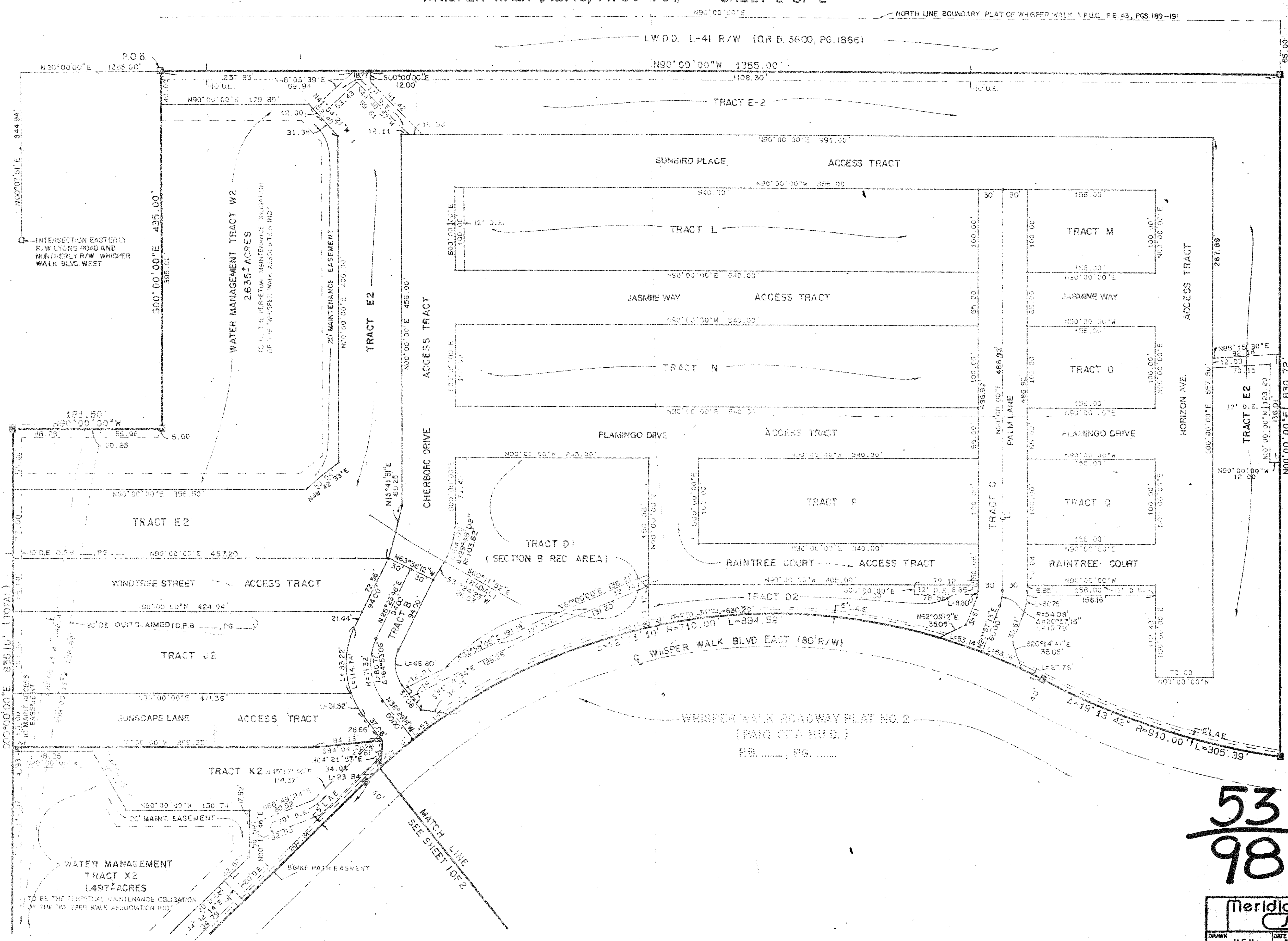


53/98

98

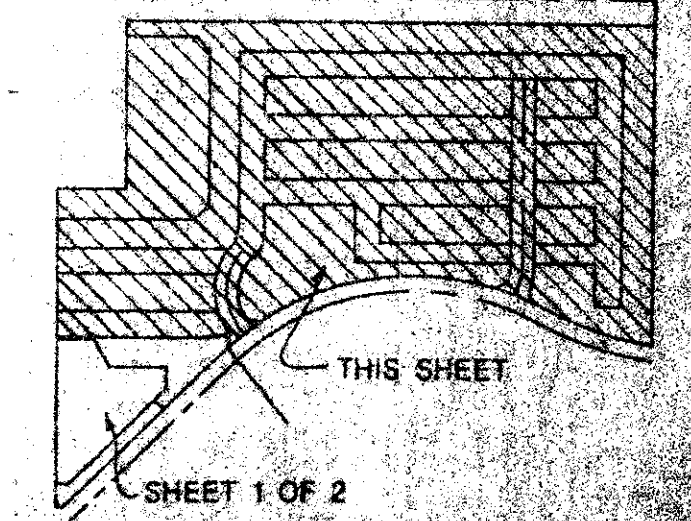
WHISPER WALK SECTION B PLAT NO.2 (PART OF A P.U.D.) SITUATE IN SECTION 5, TOWNSHIP 47 SOUTH, RANGE 42 EAST, PALM BEACH COUNTY, FLORIDA, BEING A REPLAT OF A PORTION OF TRACT A OF THE BOUNDARY PLAT OF WHISPER WALK (P.B.43, P.189-191) SHEET 2 OF 2

STATE OF FLORIDA
COUNTY OF PALM BEACH
THIS PLAT WAS FILED FOR
RECORD AT _____ DAY OF _____
AD, 1986 AND DULY RECORDED
IN PLAT BOOK _____ ON PAGES
AND
JOHN B. DUNKLE, CLERK
CIRCUIT COURT
BY: _____, D.C.



0339-304

53/98



Meridian		WEST PALM BEACH, FLORIDA	
Surveying and mapping inc.			
DRAWN	M.E.H.	DATE	MARCH, 1984
CHECKED		SCALE	1" = 60'
DRAWING NO.	83-P-130	WHISPER WALK SECTION B PLAT NO. 2 (PART OF A P.U.D.)	

DRAWING NUMBER

DRAWING NUMBER

DRAWING NUMBER

PLAN HOLD CORPORATION • IRVINE, CALIFORNIA
REORDER BY NUMBER 07548

PLAN HOLD CORPORATION • IRVINE, CALIFORNIA
REORDER BY NUMBER 07548

PLAN HOLD CORPORATION • IRVINE, CALIFORNIA
REORDER BY NUMBER 07548